

# PHILIPS VIBRATOR UNIT MODEL 220

(FOR 6 VOLT OPERATION.)

## SPECIFICATIONS. (Subject to Alteration Without Notice.)

**Battery Equipment**  
**Battery Consumption**  
**Valve Equipment**  
**Dial Lamp**  
 (For equipment of receiver)

**6 Volt Accumulator**  
**1.1 Amperes approx.**  
**1 KDD1 (Rectifier)**  
**6.3 Volt 0.1 Amp. Panel Lamp**

### APPLICATION.

Philips Type 220 Vibrator Unit is intended only for use with the Radioplayer Models set out hereunder, or other Models that may be advised from time to time:

1044U, 1754, 1840, 1949, 2240, 6510, 6515, 6713.

In the case of Model 6510 only Serial Numbers after 3200 are adaptable to vibrator.

### INSTALLATION.

**IMPORTANT:** A special 3 position switching device is located on the side of the vibrator case, and this must be adjusted to correspond to the correct position for the Radioplayer Model with which the Vibrator is being installed. The switch is adjusted by means of a screw-driver, and the adjustment must be carried out before the battery is connected. The respective switch positions for the various models are set out in the following table:

#### SWITCH POSITION.

1044U .....	B	2240 .....	A
1754 .....	B	6510 .....	B
1840 .....	A	6515 .....	B
1949 .....	B	6713 .....	C

Full instructions for the installation of the Model 220 Vibrator Unit are contained in the instruction sheet packed with each Vibrator Unit.

### MAINTENANCE.

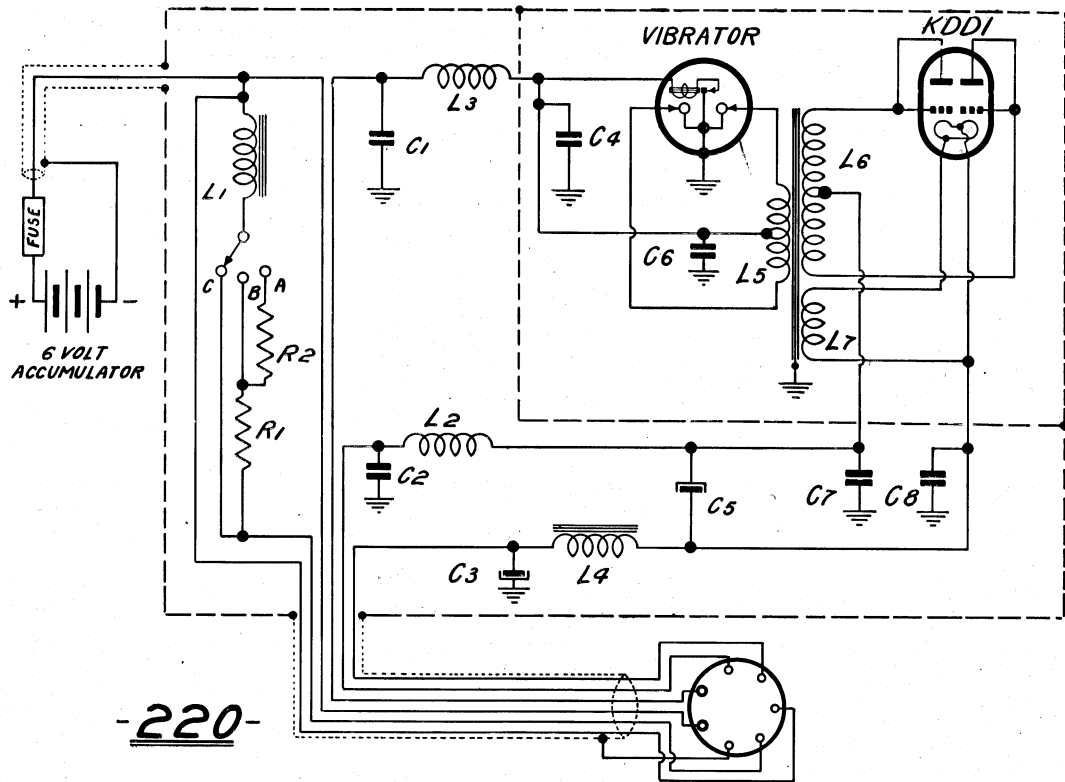
Should the vibrator fail to operate, the following points should be checked before undertaking a more serious examination:—

1. Thoroughly check over the installation instructions.
2. Check the fuse for open circuit. The fuse is located in the A+ battery lead and is a standard automobile type rated at 5 ampere.
3. It is possible that the KDD1 valve in the unit is faulty. To check this necessitates the dismantling of the unit which is achieved by removing six screws at the base after which the chassis may be removed. A KDD1 of known good quality should be substituted.

### PRECAUTIONS.

The following points should be carefully observed:—

1. Do not remove:
  - (a) The leads from the battery,
  - (b) The vibrator plug from the receiver,
  - (c) Any of the valves from the receiver without first turning the set "off."
2. Do not run the aerial lead in proximity to the battery, otherwise noise may result.
3. Do not locate either the vibrator unit or the accumulator any closer to the loudspeaker than is absolutely necessary.



# SERVICE DATA.

## COMPONENT PARTS. RESISTORS.

	No. on Diagram.	Value.	Code No.	Price.
	R1 .....	2.6 ohm	64/223	8d.
	R2 .....	1.5 ohm		

## CONDENSERS.

No. on Diagram.	Value.	Code No.	Price.	No. on Diagram.	Value.	Code No.	Price.
C1 .....	1 uF. (200 V.)	52/329	1/7	C5 .....	8 uF. (500 V.)	52/425	2/9
C2 .....	1 uF. (200 V.)	52/329	1/7	C6 .....	0.05 uF. (200 V.)	52/314	7d.
C3 .....	32 uF. (350 V.)	52/417	3/4	C7 .....	0.05 uF. (200 V.)	52/314	7d.
C4 .....	1 uF. (200 V.)	52/329	1/7	C8 .....	0.05 uF. (400 V.)	52/315	11d.

## COILS.

No. on Diagram.	Value.	Code No.	Price.	No. on Diagram.	Value.	Code No.	Price.
L1 .....	Choke 6 ohm	44/413	8/-	L5 ..... } L6 ..... } L7 ..... }	Power Transformer	44/214	8/2
L2 .....	Choke R.F. (pye wound)	42/911	1/2				
L3 .....	Choke R.F. (solenoid)	42/912	2/6				
L4 .....	Choke 250 ohm	44/415	6/6				

## MISCELLANEOUS PARTS.

No. on Diagram.	Value.	Code No.	Price.	No. on Diagram.	Value.	Code No.	Price.
—	Replacement fuse cartridge (5 amp.)	24/661	6d.	—	Receiver input cable	26/228	11/3
—	Fuse holder	24/632	1/-	—	Selector switch	34/559	2/-
—	Battery cable, complete with fuse holder	26/227	7/6	—	Vibrator cartridge	92/211	14/6
				—	"P" type valve socket	34/516	4d.

**IMPORTANT:** In ordering spare parts quote **CODE NUMBER ONLY**. If claiming free replacement under **GUARANTEE** return defective parts promptly and quote **TYPE** and **SERIAL NUMBER** of **RADIOPLAYER**. Prices quoted are strictly nett and are subject to alteration without notice.

