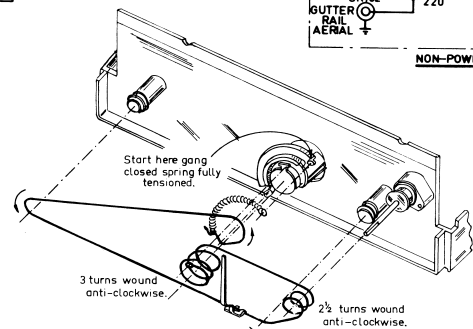
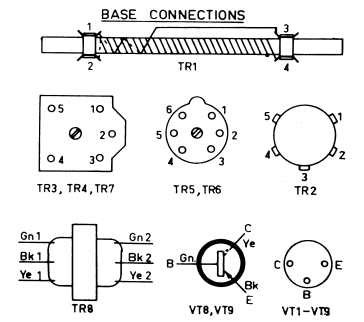


**NOTES** - ARROW ON POTENTIOMETERS INDICATES DIRECTION OF CLOCKWISE ROTATION.  
 VOLTAGES MEASURED WITH 20,000 OHM/VOLT METER WITH NO SIGNAL INPUT. RECEIVER ON PORT. OPERATION (SWC DEPRESSED.)  
 ⏏ INDICATES POSITIVE RAIL OF BOARD.  
 ⏚ INDICATES CHASSIS EARTH.



**Dial Cord Replacement:**

Remove the dial scale and top moulding as described.  
 Spring the ferrite rod from its support and remove the dial backing.  
 The accompanying diagram shows the route of the cord and the method of attachment.

