

MODIFICATION SHEET

PHILIPS RADIOPLAYER

MODELS 161A-B-C

NOTE: This sheet should be read in conjunction with the service data sheet for Model 161.

MODEL 161.

Errata.

Due to errors in preparation, some entries in the "Capacitors" and "Resistors" lists were omitted. This can be corrected by making the following alterations and additions.

Delete "2" of the entry "R1, 2" to read "R1."

Add entries of—

"R2, 22 68,000 ohms 1W carbon 10%"

"R23 0.47 megohm ½W carbon"

Add "30" to entry of "C29" to read "C29, 30."

There is a typographical error in the "Miscellaneous Components" section. The code number for "Bank, w/c switch" should read CZ.200.231.

Modifications.

A modification applied to Model 161 to overcome a tendency to instability on the 25 metres band consists of a change in value of C16 from 0.05 μ F to 0.1 μ F paper.

A modification to isolate diode current from the volume control potentiometer element consists of the interposition of a capacitor C31 of value 0.05 μ F 200V. paper, between R7 and the wave change switch, and the wiring of a resistor R24, 220,000 ohms, ½W carbon, between the junction of R7/C31 and the chassis. Included in this modification is the change of 2nd I.F. transformer to CZ.320.434.

MODEL 161A.

Model 161A incorporates the above changes and also the replacement of the aerial loop with a Ferroxcube rod aerial. The circuit diagram of this version is published overleaf.

Parts changes associated with the "A" version are—

L1	<0.5 ohms	} Rod aerial assy. CZ.323.033
L2	<0.5 ohms	
L20	<0.5 ohms	
L21	18-20 ohms	
R25	6,800 ohms	
L3	1-2 ohms	} S/W aerial coil CZ.323.034
L4	<0.5 ohms	
C1, 32	100 pF mica	
C2	30 pF air trimmer	CZ.113.700

MODEL 161B.

Model 161B is the same as Model 161A except for the replacement of the I.F. transformers. Details are—

L9	4.7-5.2 ohms	} 1st I.F.T.	A3.126.84
L10	8.0-9.0 ohms		
L11	8.3-9.2 ohms	} 2nd I.F.T.	CZ.320.444
L12	4.7-5.2 ohms		

Alignment procedure of the I.F. channel is as under—

1. Screw out the slug of the primary of the 2nd I.F.T. as far as possible.
2. Peak slugs in the following order—
Secondary 2nd I.F.T. (nearer V3)
Secondary 1st I.F.T. (nearer V2)
Primary 1st I.F.T. (nearer V1)
Primary 2nd I.F.T. (nearer V2)
3. Do not re-adjust any slugs.

MODEL 161C.

Model 161C is the same as Model 161B except that separate gear coupled volume and tone control potentiometer "on/off" switch have been replaced by a dual concentric unit. This modification affects the following items on the "Miscellaneous Components" and "Resistors" parts list of Model 161 Service Data.

Model 161C is the same as Model 161B except for—

Miscellaneous Components.

Description	Code Number
Gear, driving W/C gear wheel	CS.354.202
Gear wheel, W/C spindle	CS.354.201
Spindle, tuning	CS.351.249
Sleeve, spindle, W/C and T/c, 2x	CS.381.670
Clip, gear wheel, 2x	CS.281.832
Knob, inner	CS.432.658.5
Knob, outer	CR.523.723

Resistors.

R8	} 0.5 megohm potentiometer tapped at 0.25 megohm (volume) (outer) with S.P.S.T. switch, +2.0 megohm potentiometer (tone) (inner)	CZ.032.602
R15		

The circuit diagram for Models 161B-C is published overleaf.

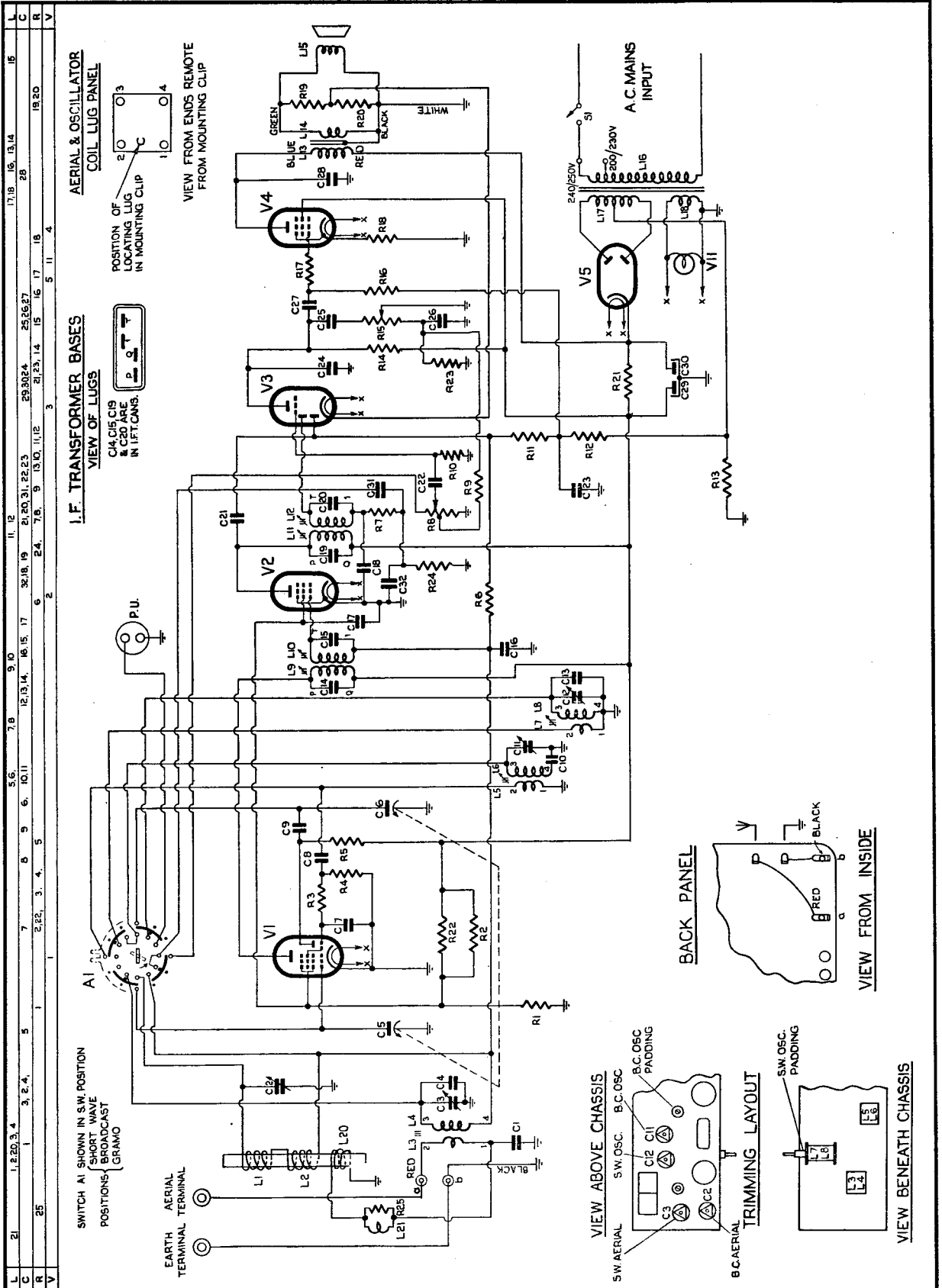
Published by

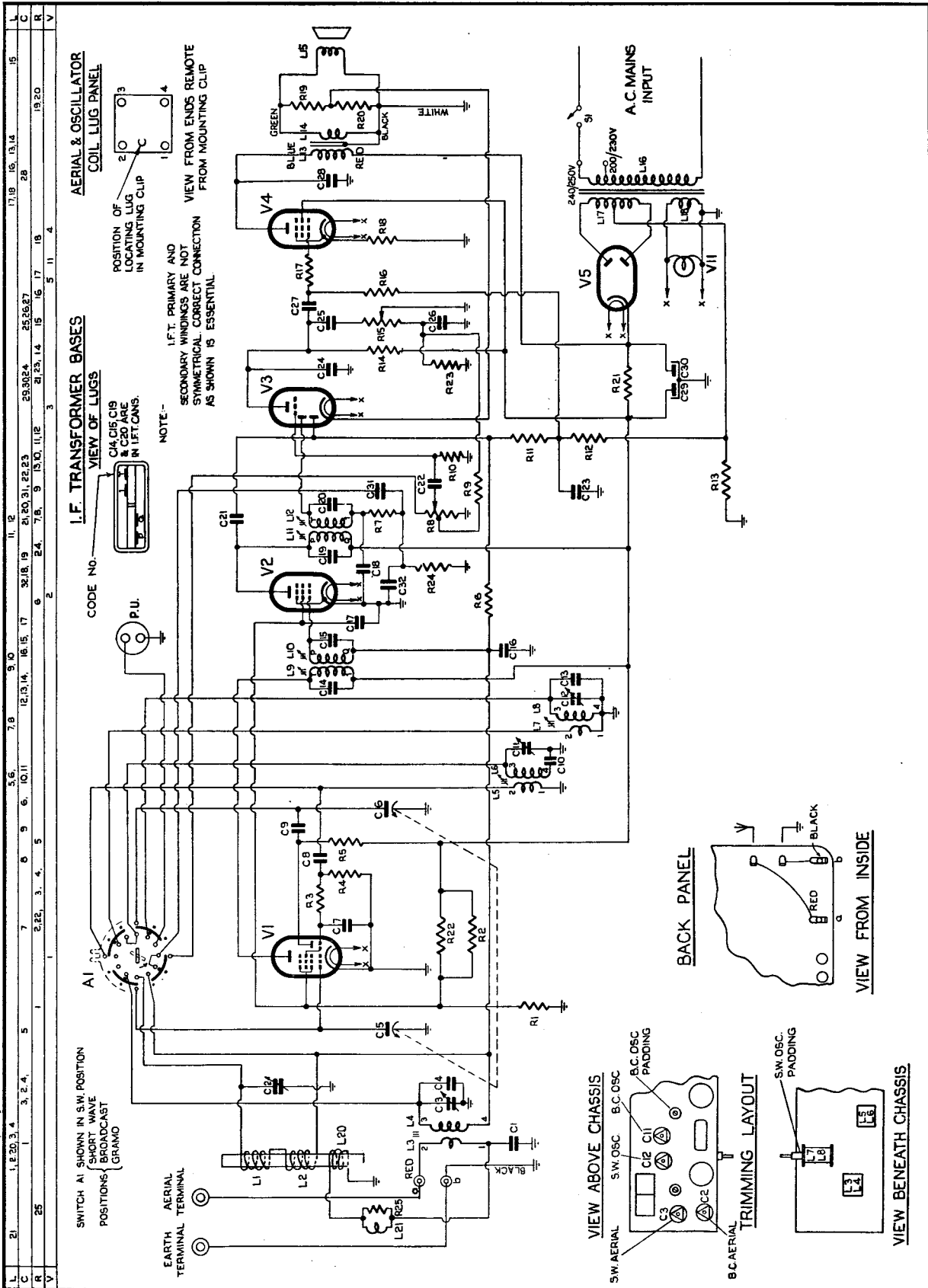
PHILIPS ELECTRICAL INDUSTRIES PTY. LTD.

SYDNEY - MELBOURNE - BRISBANE - ADELAIDE - PERTH

161A-B-C

SERVICE DATA





MODEL 161 B-C