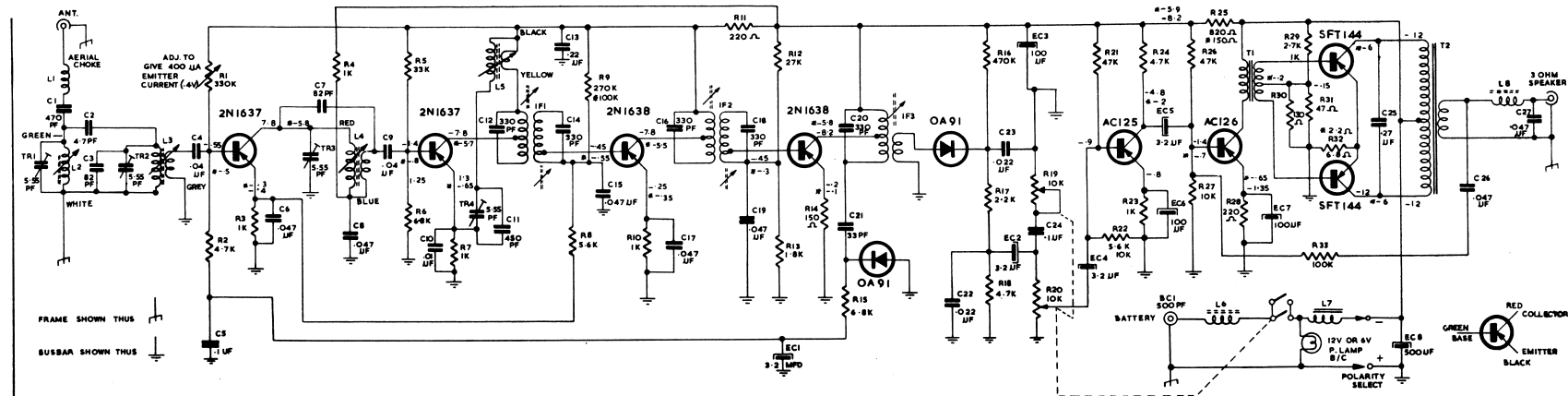


## FERRIS ALL TRANSISTOR PRESS-BUTTON CAR RADIO MODEL 149



R1	- 330K	VARIABLE RESISTOR
R2	- 4.7K	10% RESISTOR
R3	- 1K	10% RESISTOR
R4	- 1K	10% RESISTOR
R5	- 33K	10% RESISTOR
R6	- 6.8K	10% RESISTOR
R7	- 1K	10% RESISTOR
R8	- 2.6K	10% RESISTOR
R9	- 270K	10% RESISTOR
R10	- 1K	10% RESISTOR
R11	- 220Ω	10% RESISTOR
R12	- 27K	10% RESISTOR
R13	- 1.8K	10% RESISTOR
R14	- 150Ω	10% RESISTOR
R15	- 6.8K	10% RESISTOR
R16	- 470K	10% RESISTOR
R17	- 2.2K	10% RESISTOR
R18	- 4.7K	10% RESISTOR
R19	- 10K	POTENTIOMETER
R20	- 10K	POTENTIOMETER-DRST SWITCH
R21	- 47K	10% RESISTOR
R22	- 5.6K	10% RESISTOR
R23	- 1K	10% RESISTOR

R24	- 4.7K	10% RESISTOR
R25	- 820Ω	10% RESISTOR
R26	- 47K	10% RESISTOR
R27	- 10K	10% RESISTOR
R28	- 330Ω	10% RESISTOR
R29	- 2.7K	10% RESISTOR
R30	- 130Ω	10% RESISTOR
R31	- 47Ω	NTC
R32	- 4.8Ω	10% RESISTOR
R33	- 100K	10% RESISTOR

C12	- 330PF	125V STYROSEAL CAPACITOR
C13	- 22 UF	25V CAPACITOR
C14	- 330 PF	125 V STYROSEAL CAPACITOR
C15	- .047 UF	25 V CAPACITOR
C16	- 330 PF	125 V STYROSEAL CAPACITOR
C17	- .047 UF	25 V CAPACITOR
C18	- 330 PF	125 V STYROSEAL CAPACITOR
C19	- .047 UF	25 V CAPACITOR
C20	- 330 PF	125 V STYROSEAL CAPACITOR
C21	- 33 PF	125 V STYROSEAL CAPACITOR
C22	- .022 UF	25 V CAPACITOR
C23	- .022 UF	25 V CAPACITOR
C24	- .1UF	25 V CAPACITOR
C25	- .27 UF	125V POLYESTER CAPACITOR
C26	- .047 UF	25 V CAPACITOR
C27	- .047 UF	25 V CAPACITOR

EC1	- 3-2 UF	6V ELECTRO
EC2	- 3-2 UF	6V ELECTRO
EC3	- 100UF	16V ELECTRO
EC4	- 3-2 UF	6V ELECTRO
EC5	- 3-2 UF	6V ELECTRO
EC6	- 100UF	4V ELECTRO
EC7	- 100UF	4V ELECTRO
EC8	- 500UF	16V ELECTRO

BAND COVERAGE - 530-1610 KC/S  
IF FREQUENCY - 455 KC

TOTAL BATTERY CURRENT 120 MA AT 12 VOLT  
TOTAL BATTERY CURRENT 180 MA AT 6 VOLT  
COLLECTOR CURRENT OF O/P STAGE  
FOR ZERO SIGNAL 3 MA AT 12VOLTS  
FOR ZERO SIGNAL 10 MA AT 6 VOLTS

ALL RESISTORS 1/2 WATT RATING UNLESS OTHERWISE STATED.

NOTE: ALL VOLTAGES CHECKED WITH 40 000  
OPV METER AT ZERO SIGNAL INPUT.

■ THESE VALUES ARE FOR 6 VOLT SET.

DO NOT OPERATE SET WITHOUT  
SPEAKER CONNECTED

TR1	- 2 PLATE TRIMMER
TR2	- 2 PLATE TRIMMER
TR3	- 2 PLATE TRIMMER
TR4	- 2 PLATE TRIMMER

■ EC1 - 200 UF 14 VOLT FOR 6 VOLT SET  
CONSISTS OF 2X 100UF 6 VOLT

FERRIS 149

F18

F18

TOP VIEW OF SET  
SHOWING COMPONENT LAYOUT

