

PHILIPS 32V ADAPTOR UNIT

MODEL 137

SPECIFICATIONS

(Subject to alteration without notice)

Input Voltage	32V D.C.
Output Voltage	6V D.C.
Associate Equipment	Model 118 Vibrator Unit

APPLICATION.

The Model 137 adaptor unit is designed to be used in conjunction with Model 118 vibrator unit, to power Models 117, 127 and 131 Radioplayers from 32 volt direct current supply mains. It should not be used with any other equipment than that stated above.

REMOVAL OF UNIT FROM CASE.

The top of the case can be removed by removing the four screws which mount the rubber mounting feet.

INSTALLATION.

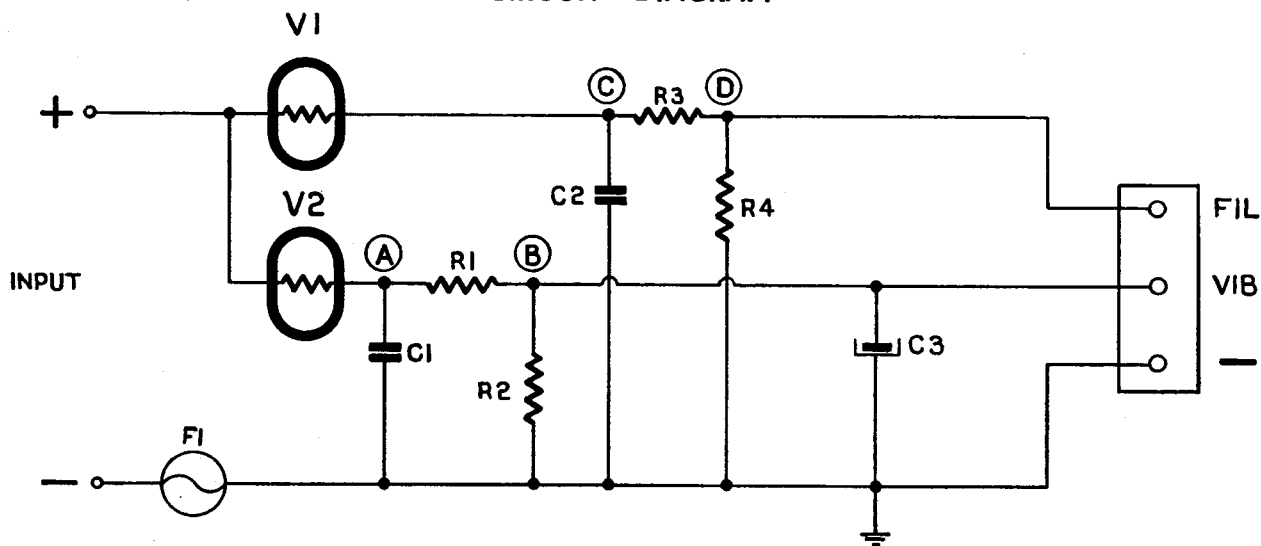
The Model 137 unit connects between the supply mains and the Model 118 vibrator unit. The negative lead of the vibrator unit input cable is connected to the negative terminal of the adaptor unit; the positive lead is split into its two wires, the one carrying the fuse is connected to the adaptor unit lug marked "VIB," the other one is connected to the lug marked "FIL."

On the input cable of the adaptor unit, the wire carrying the red sleeving is positive. The unit should be operated in a position such that the regulating tubes are upright.

In use, leave the on/off switch of the receiver permanently on and control the receiver from the supply mains switch.

For operation on 24 volt mains, resistors R1 and R3 should be short circuited.

CIRCUIT DIAGRAM



FOR 24V OPERATION SHORT CIRCUIT
R1 (A TO B) AND R3 (C TO D).

Published by Philips Electrical Industries of Australia Pty. Limited
Sydney - Melbourne - Brisbane - Adelaide - Perth

SERVICE DATA

PARTS LISTS

CAPACITORS

No.	Description
C1, 2	0.1 mF 200V paper
C3	400 mF 25V electrolytic

RESISTORS

No.	Code No.
R1-2	CZ.008.204
R3-4	CZ.008.205

MISCELLANEOUS

	Description	Code No.
V1, 2	Type 329	
F1	10A auto type fuse	CZ.280.904
	Valve socket	CZ.368.708
	Fuse holder	CZ.371.100
	Mounting foot	CS.423.010
	Grommet	CS.422.457

IMPORTANT: In ordering spare parts, please quote **CODE NUMBER** of part and **MODEL NUMBER** of unit. In claiming free replacement under **GUARANTEE**, return defective parts **PROMPTLY** and quote **MODEL** and **SERIAL NUMBER** of unit and **DATE OF PURCHASE**.