

11-88 STEREOGRAPHIC RADIOGRAM
CHASSIS NO. 89-1.

DESCRIPTION.

Model 11-88 is a six valve Broadcast Radiogram designed for the reproduction of Monaural or Stereophonic records. The chassis is equipped with dual audio amplifiers and two twin-cone loudspeakers. The record changer is a four-speed automatic model with a 'turnover' crystal pick-up cartridge for Monaural and Stereophonic records.

RECORD CHANGER. B.S.R. Model UA 14

PICK-UP CARTRIDGE. STYLI.
TC8S. Monaural 78's S35 Standard.
Stereo & L.P. S35 Stereo.

OPERATING VOLTAGES.
200 to 250 volts, 50 cps. (240V primary tapped at 220V).

AERIAL.
An inbuilt ferrite-rod aerial provides adequate signal reception for areas within a reasonable distance from radio stations. An external aerial connection is provided (red lead at rear of cabinet), for use in difficult reception areas.

EARTH.
Since three-core power flex is used, no separate earth is required.

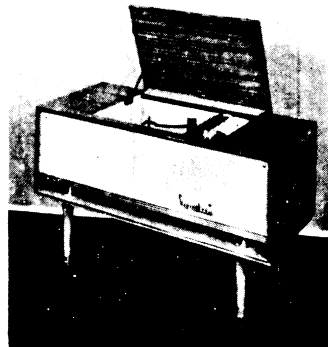
TUNING RANGE. INTERMEDIATE FREQUENCY.
535 to 1650 Kc/s. 455 Kc/s.

TO REMOVE CHASSIS AND RECORD CHANGER.
Refer card on rear of cabinet.

REPLACEMENT PARTS - NON ELECTRICAL.

Volume, Balance & Tone knobs	90-3059	Dial scale	20-277.
Gram-Radio Switch knob	90-3073.	Control Identity	
Tuning knob		Panel	69-3296.
(large)	20-352.	Plastic Control	
(small)	20-3291.	Panel Cover	20-3290.

For electrical Parts List see circuit diagram on reverse.



Series 'A' Radio Handbook.

DESCRIPTION.

11-89 PORTABLE RECORD PLAYER

Model 11-89 contains the 89-4 chassis which is a two valve audio amplifier housed in a vinyl covered plywood cabinet. It is fitted with a B.S.R. Type RP4 record player and a 'turnover' crystal pick-up cartridge Type TC8M.

STYLUS.

78 only S35 Standard.
33 & 45 S35 L.P.

DIMENSIONS.

Width 14", Depth 16", Height 6".

MAINS SUPPLY.

200 to 260 volts, 50 c.p.s. (240V primary tapped at 220V).

RECORD PLAYER AND CHASSIS REMOVAL INSTRUCTIONS.

CHASSIS:- Remove two gold-plated screws on rear cover of chassis compartment. Pull chassis out of cabinet to the limit of the lead lengths. Disconnect mains leads to record player motor and pick-up leads. The chassis may now be removed up to the limit of the power cord. For complete removal, the record player must be removed to allow the power plug to pass through the cabinet.

RECORD PLAYER:- With stylus in neutral position, P.U. arm secured on its rest and record player secured by transit screws, remove the screws that hold the motor board to the cabinet. Lift out record player to the limit of the leads, disconnect leads and remove completely.

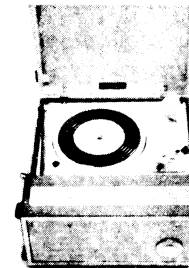
TO REPLACE.

Reverse the above procedure.

WARNING.

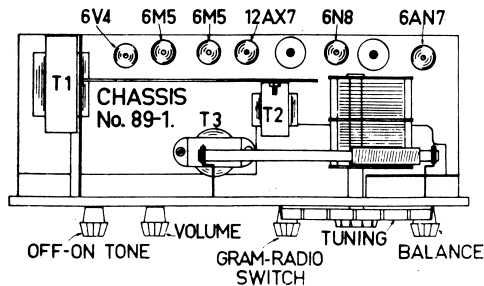
To protect records, it is advisable to remove them from the turntable after playing.

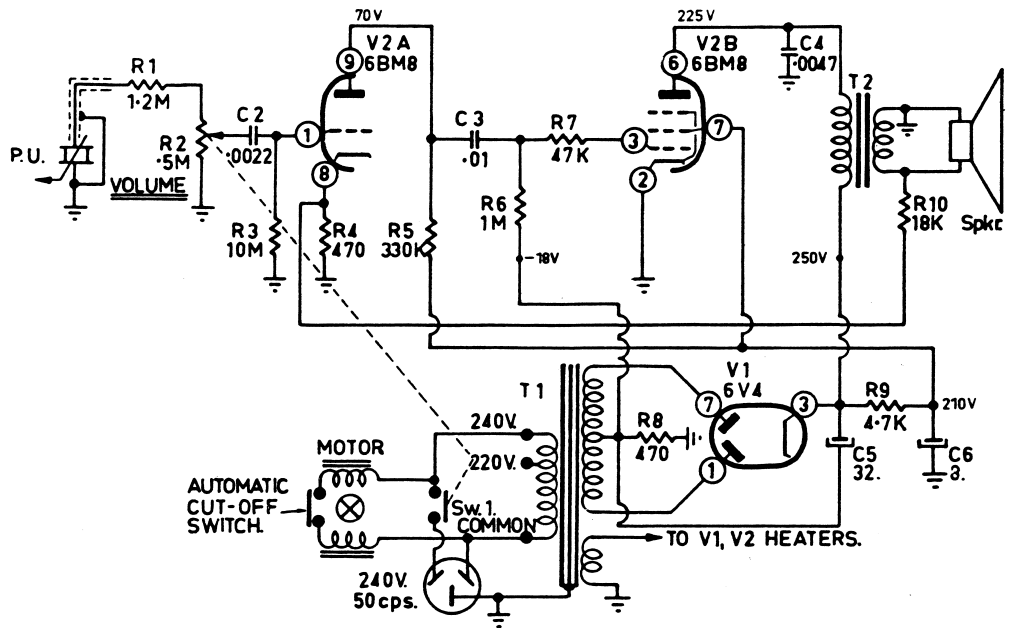
When seven or ten inch records are being played, the lid may be closed. However, with twelve inch records, the lid must be left open.



NETT WEIGHT.

18 lbs.





PARTS LIST

CHASSIS No. 89-4.

MODEL No. 11-89.

No.	DESCRIPTION	Part No.	No.	DESCRIPTION	Part No.
C2	.0022uF. 400V Paper	Ducon	R5	330K 1W BTA 20%	I.P.C.
C3	.01uF. 600V Paper	"	R6	1Meg. 1/2W BTS 20%	"
C4	.0047uF. 600V Paper	"	R7	47K 1/2W BTS 20%	"
C5	32uF. 300V ET6C Electro.	"	R8	470ohm 2W BTB 10%	"
C6	8uF. 300V ET2D Electro.	"	R9	4.7K 1W BTA 20%	"
R1	1.2Meg 1/2W BTS 10%	I.P.C.	T1	Power Transformer. Kriesler	18-98
R2	5M Pot. 1C taper SPST Sw.	"	T2	Speaker Trans. 7000/15ohm Rola	"
R3	10Meg 1/2W BTS 20%	"			
R4	470ohm 1/2W BTS 10%	"	Spkr	Loudspeaker. 6xS2 15ohm V.C. Magnav.	

ORIGINAL		CHANGE		DATE	SGND
ISSUE		DRAWN CHECKED			
MATERIAL		A MECH.		PROJECT QTY.	PROJECT QTY.
GAUGE		B ELEC.		PROJECT QTY.	PROJECT QTY.
FINISH		C STYLING			
Prescription No.		D O.E. LERVE			
PORTABLE RECORD PLAYER				D 11-89.	
Work to Dimensions only. Unless otherwise specified. Tolerances to be read as: ± 1/64" on Fractions. ± .008" on Decimals.					
Before production is commenced 2 samples must be submitted to Drawing Office for approval.					
This Drawing must be returned to KRIESLER AUSTRALASIA PTY. LTD. 43 ALICE STREET, NEWTOWN.					
					SCALE