

TECHNICAL SERVICE INFORMATION

ISSUED BY

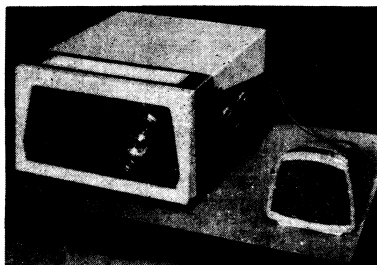
KRIESLER AUSTRALASIA PTY. LTD.

43 ALICE ST. NEWTOWN. Phone: LA 0400

SERIES "A" RADIO HANDBOOK

DESCRIPTION. Model 11-83 is a five valve Broadcast Portable Radiogram designed to play both monaural and Stereophonic records. It is fitted with a B.S.R. Record Player type HF8 and a "turnover" crystal pick-up cartridge type TC8S.

MODEL 11-83 Record Player
MODEL 11-84 Record Changer



Model 11-84 uses the same chassis as Model 11-83 and is fitted with a B.S.R. Record Changer type UA8 and a "turnover" crystal pick-up cartridge type TC8S.

STYLII. Monaural 78's - S35 Standard Stereo and L.P.-S35 Stereo.

RECORD PLAYER/CHANGER AND CHASSIS REMOVAL INSTRUCTIONS.

TO REMOVE RECORD PLAYER/CHANGER. Loosen two thumb screws and remove second stereo speaker unit. Remove six screws and cover plate of radio compartment. With stylus in neutral position, pick-up arm secured on its rest and the record player/changer secured by transit screws, remove the six screws holding the motor board to the cabinet. Disconnect power supply cable to unit at terminal block on rear of chassis and unplug pick-up leads. The record player/changer may now be removed from the cabinet by first raising the L.H.S., the lifting it clear.

TO REMOVE CHASSIS. Remove Aerial screw (from underneath), two rear chassis mounting screws and loosen two screws clamping the speaker baffle to the front of the cabinet. Disconnect second stereo speaker cable from clamp. The chassis may now be turned face downward and removed through the record player/changer compartment.

TO REPLACE. Reverse above procedure. When re-connecting the P.U. leads, the shielding braid should be connected to the R.H. terminal (nearest power trans.)

DIMENSIONS. Width 20 1/4", Depth 16 1/2", Height 9 1/2". **WEIGHT.** Packed 36 lbs. Nett 30 lbs.

MAINS SUPPLY. 200 to 260 Volts (With 220 V. tap), 50 c.p.s.

TUNING RANGE. 535 - 1650 Kc/s. **ALIGNMENT PROCEDURE.** Conventional. I.F. Freq. - 455Kc/s.

AERIAL. A ferrite-rod aerial is built into the receiver and an external aerial terminal is provided on the base of the cabinet. (Identified by red washer.)

TO REPLACE DIAL LAMPS. Remove gold-plated screw in centre of tuning knob and remove knob. Remove two screws securing dial scale and remove scale. The dial lamps will now be accessible through the hole in the front panel. Replace with 6.3 Volt, 0.3 Amp. Radio dial lamps only - never use flashlight lamps.

OPERATING INSTRUCTIONS. The extension stereo speaker is wired so that when placed on the R.H. side of the main cabinet, correct directional polarity with standard stereophonic records will be obtained. To change polarity, reverse the leads to the two outer terminals on the P.U. cartridge.

When operating the radio receiver with the extension stereo speaker fitted in the main cabinet, it may be advisable to keep the balance control in the full anti-clockwise position so as to reduce the extension stereo speaker volume level.

For optimum stereophonic effect, it is recommended that the tone control be kept in the full treble position (fully anti-clockwise).

TECHNICAL SERVICE INFORMATION

ISSUED BY

KRIESLER AUSTRALASIA PTY. LTD.

43 ALICE ST. NEWTOWN. Phone: LA 0400

Series "A" Radio Handbook

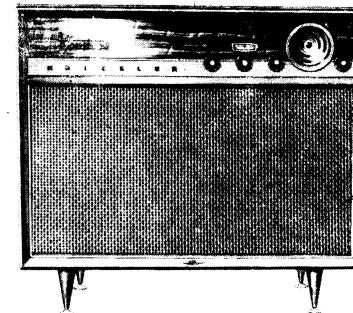
11-85 STEREOPHONIC RADIOGRAM

DESCRIPTION.

Model 11-85 is a six valve Broadcast Radiogram designed for the reproduction of Monaural or Stereophonic records. The chassis is equipped with dual audio amplifiers and two twin-cone loudspeakers. The record changer is a four-speed automatic model with separate pick-up cartridges for Monaural and Stereophonic records.

RECORD CHANGER. Garrard Model 210

PICK-UP CARTRIDGES	STYLII
Monaural...Garrard GC2.	78.... GC2-3
Stereo....GarrardGCS10/2	33.45...GC2-1
	Stereo..GCS10/2



OPERATING VOLTAGES. 200 to 250 volts, 50 cps. (240V primary tapped at 220V).

AERIAL.

An inbuilt plate aerial provides adequate signal reception for areas within a reasonable distance from radio stations.

EARTH. Since three-core power flex is used, no separate earth is required.

ALIGNMENT INSTRUCTIONS.

Conventional. I.F.Frequency 455 Kc/s. Tuning Range 535-1650 Kc/s.

GENERAL OPERATION.

MONAURAL. Both audio amplifiers are connected in parallel through a bridge in the pick-up head. The balance control should be adjusted for equal volume from each speaker.

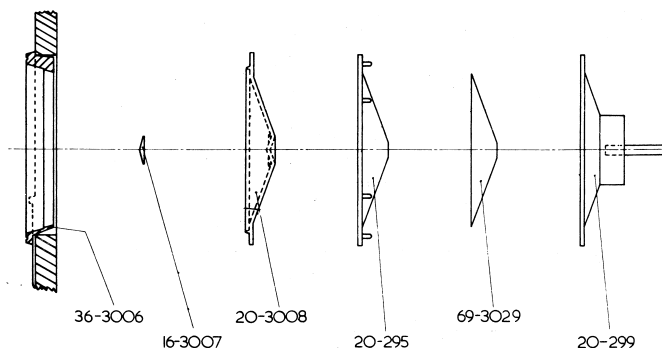
STEREOPHONIC. On stereophonic operation, the special twin-crystal pick-up cartridge is used to deliver the stereo information to separate audio amplifiers and loudspeakers. The Balance setting for Monaural operation may not necessarily be correct for Stereo operation. This control is best adjusted with the aid of a test record designed for the purpose.

CONNECTION OF EXTENSION SPEAKERS. Refer to small card on back of cabinet

TO REMOVE CHASSIS OR RECORD CHANGER. Refer to instruction card on back of cabinet

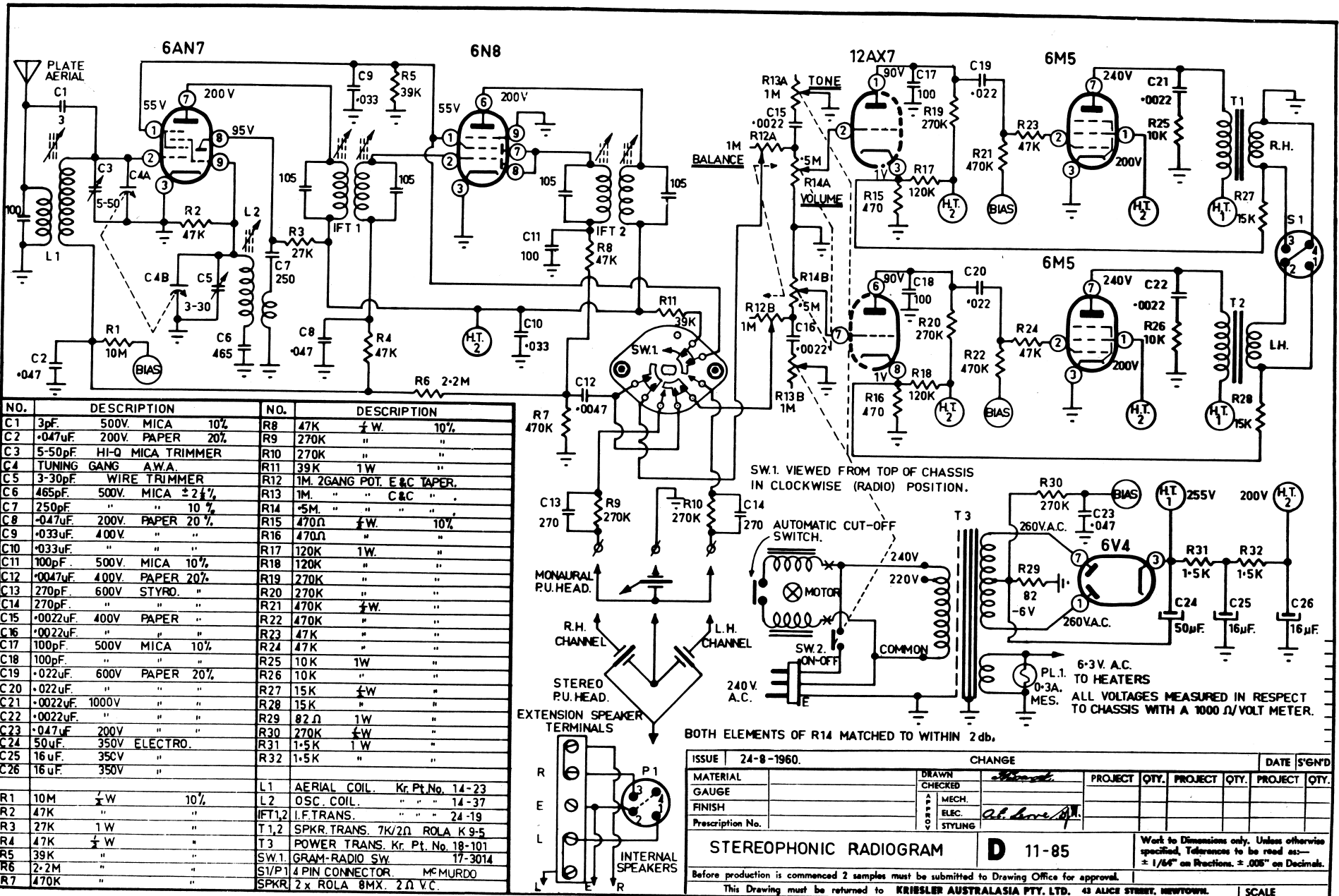
DIAL DRIVE LAYOUT. Refer Series 'A' Radio Handbook for Model 11-77

DIAL MECHANISM PART NUMBERS.



OTHER PART NUMBERS

Knobs	
Gram/Radio switch assembly..	36-3005
	90-3021
Vol. Control.....	32-65
Tone Control.....	32-63
Balance Control	32-64



NO.	DESCRIPTION	NO.	DESCRIPTION
C1	3pF. 500V. MICA 10%	R8	47K 1/2 W. 10%
C2	.047uF. 200V. PAPER 20%	R9	270K " "
C3	5-50pF. HI-Q MICA TRIMMER	R10	270K " "
C4	TUNING GANG A.W.A.	R11	39K 1W " "
C5	3-30pF. WIRE TRIMMER	R12	1M. 2GANG POT. E & C TAPER.
C6	465pF. 500V. MICA ±2 1/2%	R13	1M. " " C & C "
C7	250pF. " " 10%	R14	.5M. " " " " "
C8	.047uF. 200V. PAPER 20%	R15	470Ω 1/2 W. 10%
C9	.033uF. 400V. " " "	R16	470Ω 1/2 W. " "
C10	.033uF. " " " "	R17	120K 1W. " "
C11	100pF. 500V. MICA 10%	R18	120K " " "
C12	.0047uF. 400V. PAPER 20%	R19	270K " " "
C13	270pF. 600V. STYRO. " "	R20	270K " " "
C14	270pF. " " " "	R21	470K 1/2 W. " "
C15	.0022uF. 400V. PAPER " "	R22	470K " " "
C16	.0022uF. " " " "	R23	47K " " "
C17	100pF. 500V. MICA 10%	R24	47K " " "
C18	100pF. " " " "	R25	10K 1W " "
C19	.022uF. 600V. PAPER 20%	R26	10K " " "
C20	.022uF. " " " "	R27	15K 1/2 W. " "
C21	.0022uF. 1000V " " "	R28	15K " " "
C22	.0022uF. " " " "	R29	82 Ω 1W " "
C23	.047uF. 200V " " "	R30	270K 1/2 W. " "
C24	50uF. 350V ELECTRO. " "	R31	1.5K 1W " "
C25	16uF. 350V " " "	R32	1.5K " " "
C26	16uF. 350V " " "		
R1	10M 1/2 W 10%	L1	AERIAL COIL. Kr Pt. No. 14-23
R2	47K 1/2 W " "	L2	OSC. COIL. " " 14-37
R3	27K 1W " "	IFT1,2	I.F. TRANS. " " 24-19
R4	47K 1/2 W " "	T1,2	SPKR. TRANS. 7K/2Ω ROLA K 9-5
R5	39K " " "	T3	POWER TRANS. Kr Pt. No. 18-101
R6	2-2M " " "	SW.1	GRAM-RADIO SW. 17-3014
R7	470K " " "	S1/P1	4 PIN CONNECTOR. MCMURDO
			SPKR. 2x ROLA 8MX. 2Ω V.C.

ISSUE		CHANGE				DATE		SG'ND	
24-8-1960.									
MATERIAL		DRAWN	CHECKED	PROJECT	QTY.	PROJECT	QTY.	PROJECT	QTY.
GAUGE									
FINISH		MECH.							
Prescription No.		ELEC.							
		STYLING							
STEREOPHONIC RADIOGRAM				D 11-85		Work to Dimensions only. Unless otherwise specified. Tolerances to be read as— ± 1/64" on Fractions. ± .005" on Decimals.			
Before production is commenced 2 samples must be submitted to Drawing Office for approval.									
This Drawing must be returned to KRIESLER AUSTRALASIA PTY. LTD. 43 ALICE STREET, NEWTOWN. SCALE									