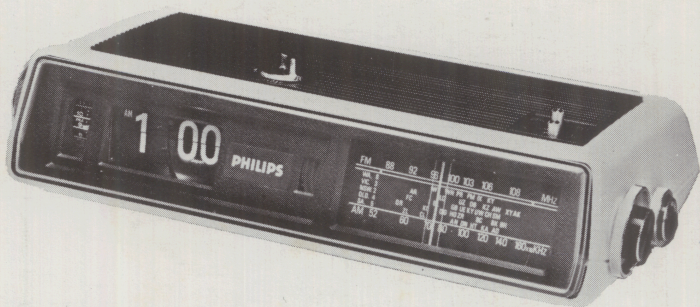


Service  
Service  
Service



# Service Manual

The — 01 version of model 02RS100 has been electrically redesigned and now incorporates an integrated circuit. The changes are shown in the circuit diagram and electrical parts list on this sheet.

All other relevant information is contained in the Service Manual for model 02RS100, with the exception of the mechanical parts listed below.

MECHANICAL PARTS LIST

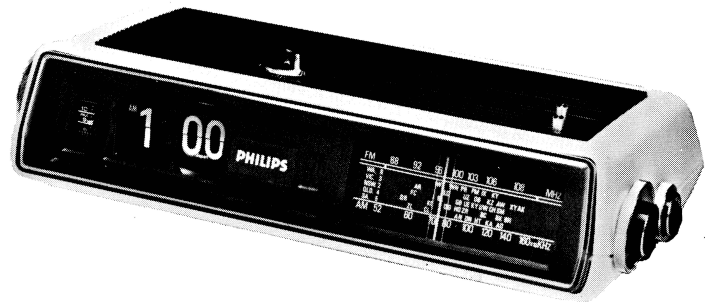
(Items different from, and additional to, model 02RS100)

Ref.	Description	Code Number
12	Loudspeaker, 8 ohm, 0.5 w, 77 mm. dia.	4822 240 30096
21	A.M. aerial assembly (complete)	4802 158 67081
27	Dial plate	4802 333 37013
35	Mains transformer	4802 146 27052
58	Lamp, 9 v. 40mA (with lead)	4802 134 47067
—	Tuning shaft	4802 520 57007
—	Mains lead	4802 321 17026





Service  
Service  
Service



# Service Manual

The — 01 version of model 02RS100 has been electrically redesigned and now incorporates an integrated circuit. The changes are shown in the circuit diagram and electrical parts list on this sheet.

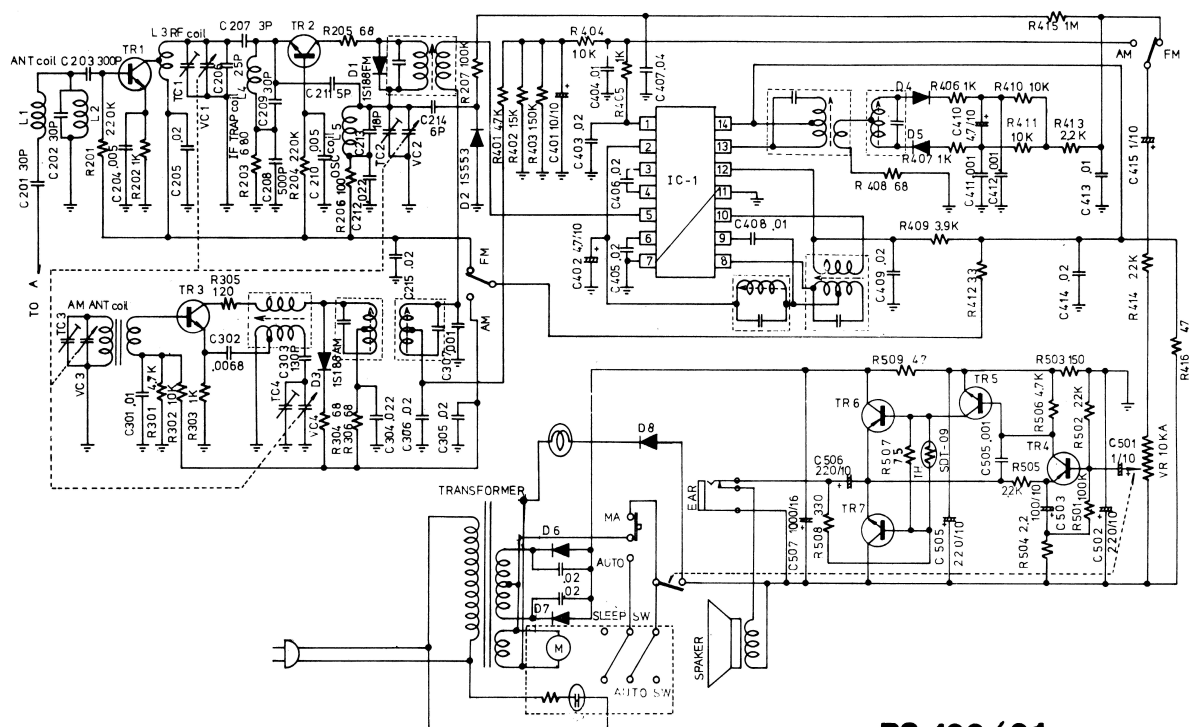
All other relevant information is contained in the Service Manual for model 02RS100, with the exception of the mechanical parts listed below.

## MECHANICAL PARTS LIST

(Items different from, and additional to, model 02RS100)

Ref.	Description	Code Number
12	Loudspeaker, 8 ohm, 0.5 w, 77 mm. dia.	4822 240 30096
21	A.M. aerial assembly (complete)	4802 158 67081
27	Dial plate	4802 333 37013
35	Mains transformer	4802 146 27052
58	Lamp, 9 v. 40mA (with lead)	4802 134 47067
—	Tuning shaft	4802 520 57007
—	Mains lead	4802 321 17026





**RS-100/01**

## ELECTRICAL PARTS LISTS

### 1. Semiconductors

D	Description	Code Number
1,4,5	Diode 1S - 188FM	4802 130 37115
2	Diode 1S - 553	4802 130 37116
3	Diode 1S - 188AM	4802 130 37115
6,7,8	Diode 1N - 4001	4822 130 30197

TR	Description	Replacement	Code Number
1,2,3	Transistor 2SC930D	BF494	5322 130 44195
4	Transistor 2SA659E	BC327	4822 130 40854
5	Transistor 2SC536D		4802 130 47151
6,7	Transistor - matched pair } 2SB187 - 2SD187	AC187/188	5322 130 40347
I.C.1	Integrated circuit LA1201		4822 209 80255

### 2 Inductors

Description	Code Number
A.M. Aerial assembly (complete) incl. Aerial coil	4802 158 67081
A.M. Osc.Tx	4802 156 17037
F.M. IFT - 1	4802 156 17038
- 2	4802 153 57052
- 3	4802 153 57053
- 4	4802 153 57054
A.M. IFT - 5	4802 153 57055
- 6	4802 153 17154
- 7	4802 153 17155
Power transformer	4802 153 17156
Loudspeaker (8 ohm, 0.5W, 77 mm dia.)	4802 146 27052
	4802 240 30096

### 3. Resistors

All resistors are  $\pm 0.5\%$ , 0.25 watt, carbon film, except where shown.

VR1	Rotary potentiometer, 10K/A	4802 100 57011
TH	Thermistor SDT-09	4802 116 37015

### 4. Capacitors

All capacitors are standard types and values, except where shown.

C	Description	Code Number
212	22nF $\pm 10\%$ 50V, mylar	4802 121 47163
301	10nF $\pm 10\%$ 50V, mylar	4802 121 47158
302	6.8nF $\pm 10\%$ 50V, mylar	4802 121 47156
304	22nF $\pm 10\%$ 50V, mylar	4802 121 47163
401	10mF 10V, electrolytic	4802 124 47044
402, 410	4.7mF 10V, electrolytic	4802 124 20466
415, 501	1mF 10V, electrolytic	4802 124 20583
502	220mF 10V, electrolytic	4802 124 47006
503	100mF 10V, electrolytic	4802 124 47002
505, 506	220mF 10V, electrolytic	4802 124 47006
507	1000mF 16V, electrolytic	4802 124 47051
VC1-4	Tuning gang	4802 125 47014