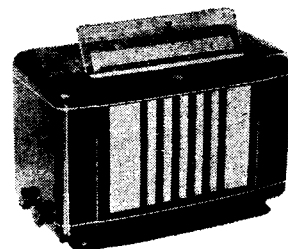




# MULLARD MASTER RADIO MODEL MAS1107



## SPECIFICATIONS

Subject to alteration without notice.

Power Supply .....	220-260 volts 40-60 C/s
Tuning Range .....	530-1620 Kc/s
Intermediate Frequency .....	455 Kc/s
Cabinet .....	De luxe bakelite table

## VALVE EQUIPMENT AND VOLTAGE ANALYSIS

Valve Function	Valve No.	Valve Type	Plate Volts	Screen Volts	Osc. P. Volts	Bias Volts	Bias Resistor	
Frequency Converter	V1	ECH35	200	70	100	-1.25	R6	
I.F. Amplifier	V2	6SK7GT	200	75	—	-1.25	R6	
Demodulator, A.V.C. and 1st Audio	V3	6SQ7GT	95	—	—	0	—	
Power Amplifier	V4	6V6GT	185	200	—	-12.0	R5 & R6	
Rectifier	V5	5Y3GT	Unfiltered B + to L8 C.T. — 237V.					
Dial Lamps	V11 & V12	6.3V	0.32A tubular screw					

NOTE: These voltages are measured with a "1,000 ohms per volt" meter, and may vary  $\pm$  10% from the figures quoted. They are measured from the socket points indicated to chassis, or across the resistors listed. The receiver should be in a "no signal" condition.

### MAINS VOLTAGE ADJUSTMENT.

The power transformer is provided with two primary winding tapings, 220-240 volts and 250-260 volts, by means of which the receiver may be adjusted to the mains voltage at the point of installation. The receiver is adjusted to the 220-240 volts tapping before despatch from the factory.

### REMOVAL OF CHASSIS FROM CABINET.

The incorporation of a removable chassis bottom cover or "service window" permits much service work being

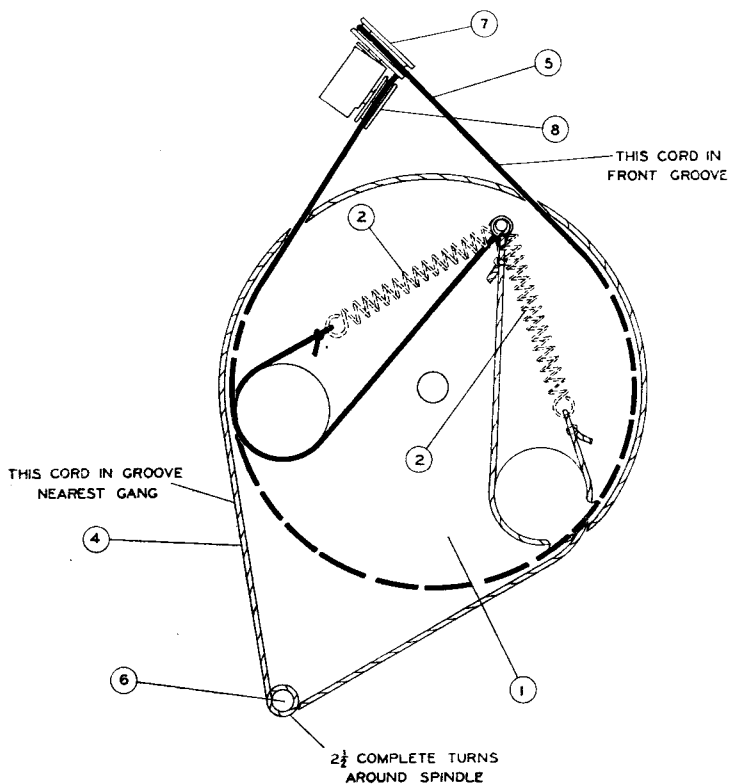
carried out on this receiver without the need to remove the chassis from the cabinet. If it is necessary that the chassis be removed, proceed as follows.

Remove the power plug from the mains outlet socket. Remove the cabinet back, the bottom cover, the plate aerial wire, the control knobs, speaker plug from its socket, and release the dial cursor from the dial cord. Removal of the four chassis mounting bolts permits the chassis to be withdrawn from the cabinet.

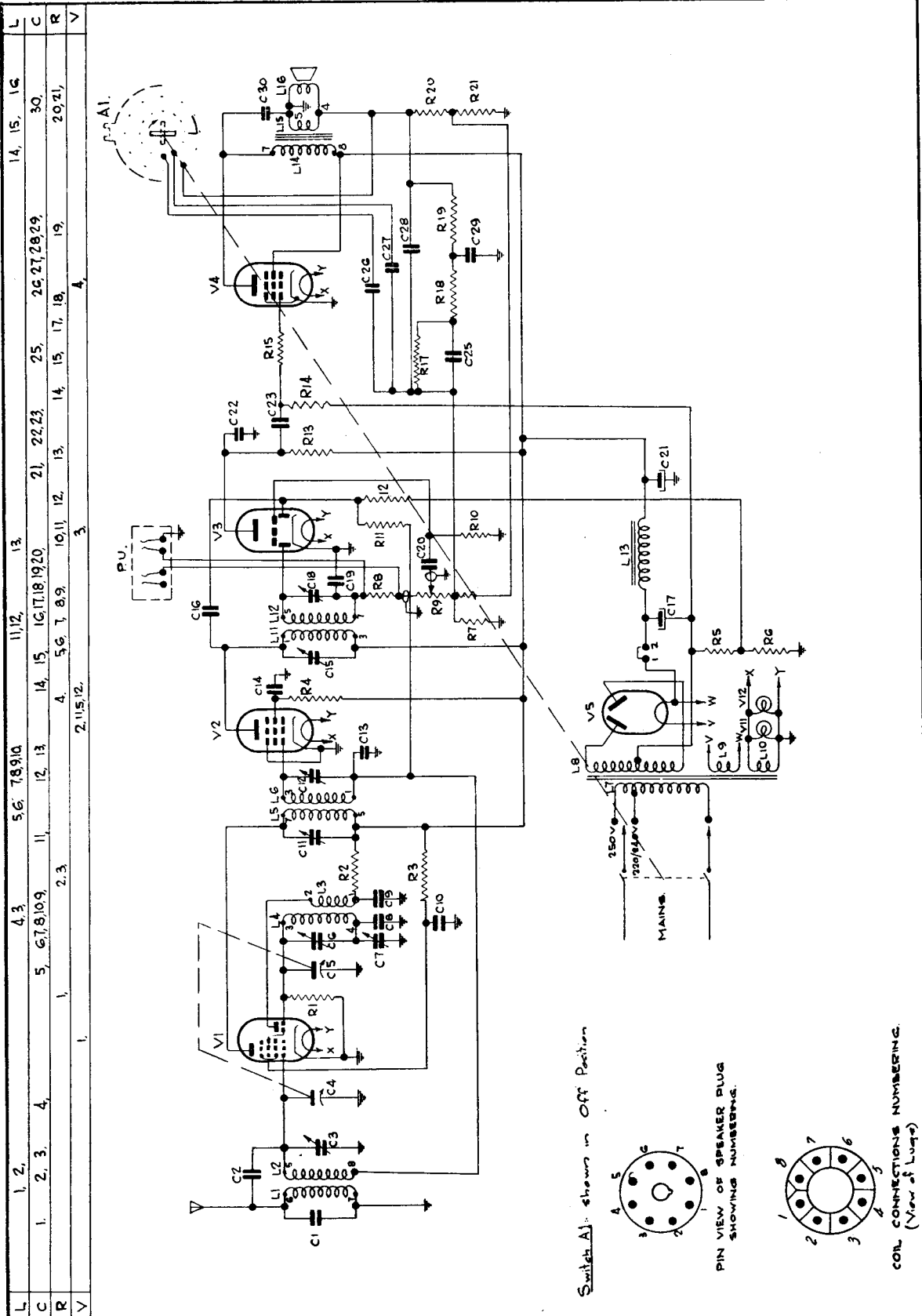
The chassis may be replaced by a reversal of the above procedure.

### COMPONENTS NOT SHOWN ON CIRCUIT DIAGRAM

No. on Dial Parts Diagram	Description	Code No.	No. on Dial Parts Diagram	Description	Code No.
—	Assembly, baffle	CR.005.219	—	Clamp, speaker mounting	CS.234.813
—	Assembly, chassis cover	CR.572.017	—	Clip, dial glass mounting	CS.227.000
—	Assembly, cursor	CR.480.618	—	Cloth, speaker baffle	CE.081.14
1	Assembly, dial drum	CR.382.805	—	Contact, aerial plate	CS.106.204
—	Assembly, dial glass mounting bracket	CR.265.200	5	Cord, dial	CS.361.817
—	Assembly, lampholder	CZ.367.900	4	Cord, drum	CS.361.818
—	Assembly, T/C on/off switch (Complete)	CZ.200.215	—	Glass, dial, printed	CS.412.240
—	Assembly, T/C clicker	CR.450.019	—	Grommet, chassis mounting	CS.422.421
—	Assembly, terminal	CZ.376.200	—	Grommet, power cord	CS.422.414
—	Back, cabinet	CS.462.037	—	Knob, vol. and tone controls	CR.523.646
—	Badge, Mullard	CR.531.409	—	Knob, tuning control	CR.523.647
—	Bank, T/C switch	CZ.200.204	—	Nut, tee (chassis mtg.)	CH.603.014
—	Bracket, cab. back top mounting	CS.244.602	—	Plate, aerial	CS.108.000
—	Bracket, gantry top	CR.295.000	—	Plate, anchoring (bottom cover)	CS.257.905
—	Bracket, gantry side	CS.250.002	7	Pulley, wooden (large)	CS.360.202
—	Bracket, lampholder mounting R.H.	CR.265.201	8	Pulley, wooden (small)	CS.360.201
—	Bracket, lampholder mounting L.H.	CR.265.202	—	Ring C (tuning spindle)	CS.281.802
—	Bracket, volume control mounting	CS.230.602	—	Rod, dial slide	CS.382.209
—	Bracket, slide rod mounting	CS.244.601	—	Shield, chassis	CS.117.239
—	Bracket, tuning spindle	CS.224.607	—	Socket, octal wafer	CZ.369.507
—	Cabinet	CS.460.482	—	Socket, pick-up	CZ.370.106
—	Clamp, baffle mounting	CS.235.826	6	Spindle, tuning	CS.351.222
			2	Spring, dial drum	CS.210.010
			—	Spring, slide rod	CS.255.001
			—	Spring, tuning spindle	CS.212.001
			—	Switch, mains on/off	CZ.220.001



**DIAL PARTS  
DIAGRAM**





SERVICE DATA

MAS1107.

PARTS LISTS

**CAPACITORS**

No.	Description	Code No.
C1	150 pfd mica	
C2	5 pfd glass	CZ.102.303
C3	30 pfd glass trimmer	CZ.117.600
C4-5	2 gang tuning	CZ.107.711
C6	30 pfd air trimmer	CZ.113.700
C7-11-12-15-18	125 pfd ceramic trimmer	CZ.118.200
C8	380 pfd mica	
C9-10-14-20-30	0.01 mfd 600V paper	
C13	0.1 mfd 200V paper	
C16	33 pfd ceramic	CZ.096.605
C17-21	24 mfd 350V electrolytic	
C19-22	100 pfd ceramic	CZ.096.602
C23	0.02 mfd 600V paper	
C25	0.05 mfd 400V paper	
C26	0.02 mfd 400V paper	
C27	0.004 mfd 600V paper	
C28	0.002 mfd 600V paper	
C29	0.04 mfd 600V paper	

**RESISTORS**

No.	Description	Code No.
R1-8-15-17	50,000 ohms ½W carbon	
R2	30,000 ohms 1W carbon	
R3-4	50,000 ohms 1W carbon	
R5	200 ohms 1W W/W	
R6	25 ohms 1W W/W	
R7	2,500 ohms ½W carbon	
R9	0.5 megohms tapped potentiometer	CZ.029.118
R10	5 megohms 1W carbon	
R11-12	1 megohm ½W carbon	
R13	250,000 ohms 1W carbon	
R14	0.5 megohms ½W carbon	
R18	10,000 ohms ½W carbon	
R19	1,000 ohms ½W carbon	
R20	100 ohms ½W carbon	
R21	25 ohms ½W carbon	

**COILS**

No.	Description	Ohms	Code No.
L1	Aerial and Oscillator Coil	18.	CZ.320.017
L2		3.3	
L3		2.2	
L4		4.2	
L5	1st I.F. Transformer	4.5	CZ.320.415
L6		4.5	
L7	Power Transformer	27	CZ.344.019
L8		600	
L9		<.5	
L10		<.5	
L11	2nd I.F. Transformer	4.5	CZ.326.202
L12		4.5	
L13	Filter Choke	450	CZ.340.406
L14	Speaker & Transformer 5,000 ohms	550	CZ.161.207
L15		.5	
L16		2.8	

**IMPORTANT! In ordering spare parts, quote CODE NUMBER of part and MODEL NUMBER of Receiver. In claiming free replacement under GUARANTEE, return defective part PROMPTLY and quote MODEL and SERIAL NUMBER of Receiver and DATE OF PURCHASE.**