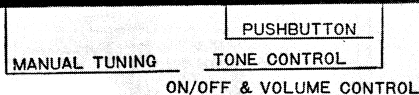
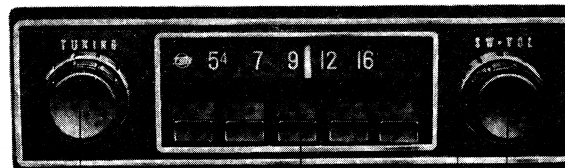


# SPECIFICATIONS

TUNING RANGE .....535 to 1605 kHz  
 INTERMEDIATE FREQUENCY .....455 kHz  
 SENSITIVITY .....26 dB or better at 0.5 watt output  
 AUDIO OUTPUT .....2.5 watts or more (at KF=10%)  
 SPEAKER IMPEDANCE .....4 ohms  
 POWER INPUT .....12 volt battery, negative terminal to ground  
 Voltage .....13.2 VDC  
 Current .....Approx. 0.5 ampere at 0.5 watt output  
 TRANSISTORS .....6, plus 5 diodes  
 DIMENSIONS .....6¼"(W), 1¾"(H), 3¾"(D) (160×44×86mm)  
 WEIGHT .....Tuner.....1.9 lb. (0.85 kg)  
                   Speaker.....0.44 lb. (0.2 kg)

Ten M-535

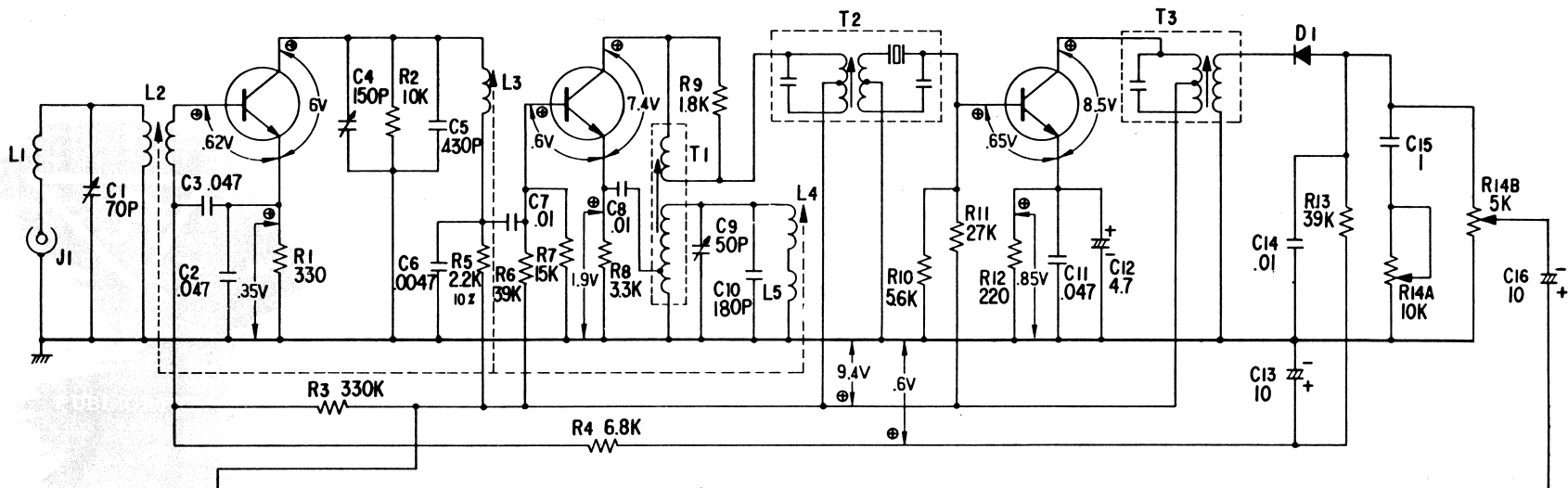
T23



TR1 2SC710

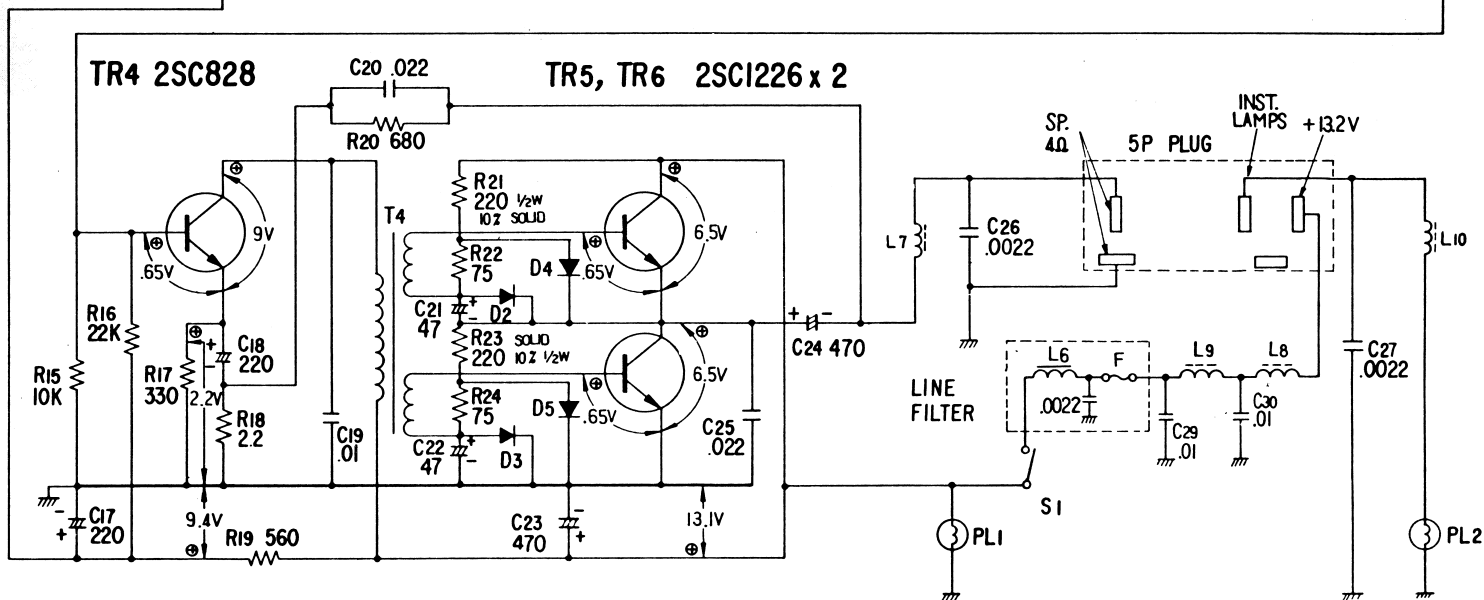
TR2 2SC710

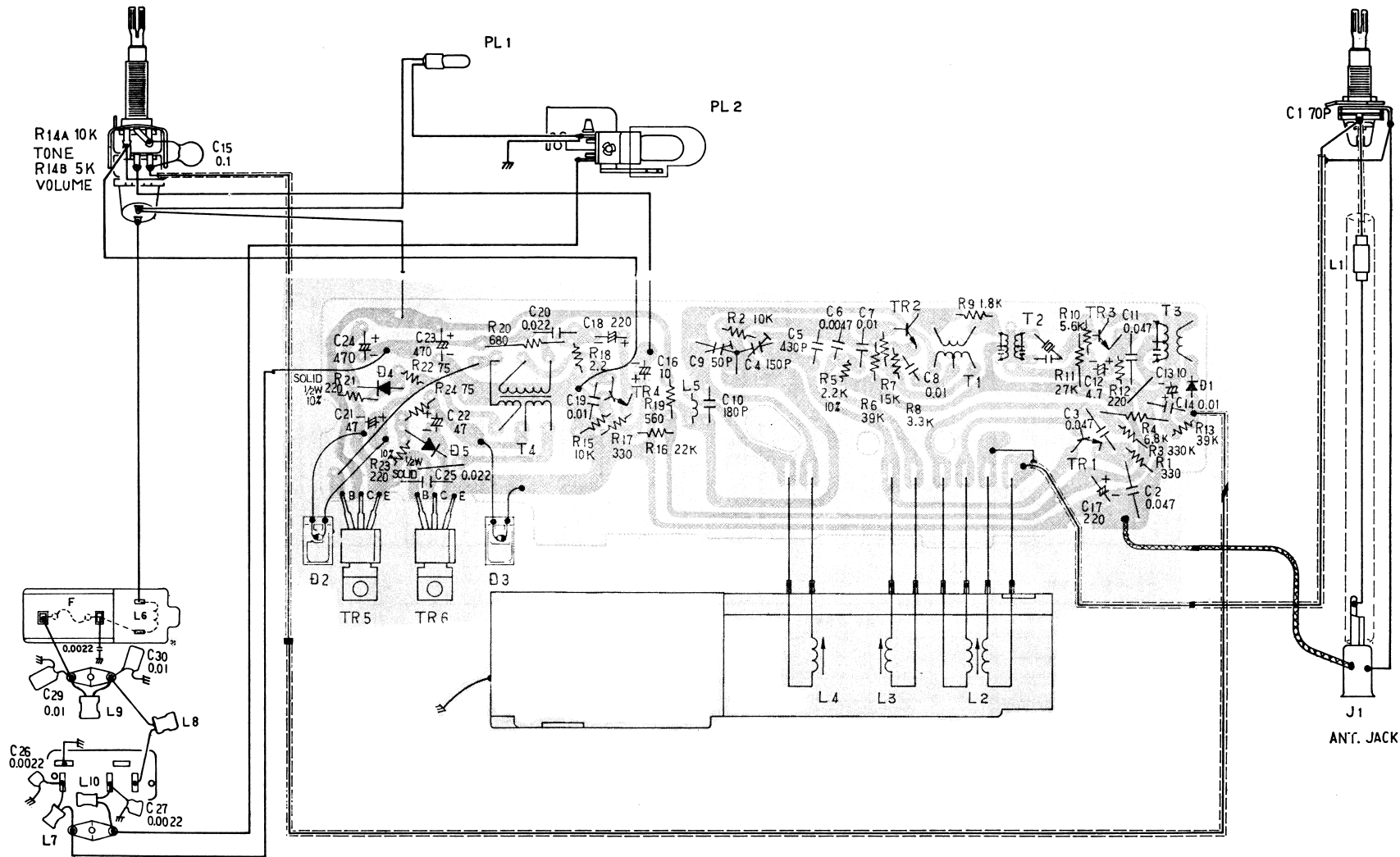
TR3 2SC710



TR4 2SC828

TR5, TR6 2SC1226 x 2





ALL RESISTANCES ARE IN OHMS, K=1,000. ALL RESISTORS ARE CARBON RESISTOR

1/8W, 5% UNLESS OTHERWISE STATED.

ALL CAPACITANCE IN  $\mu F$  (MICROFARADS), P= $\mu\mu F$ .