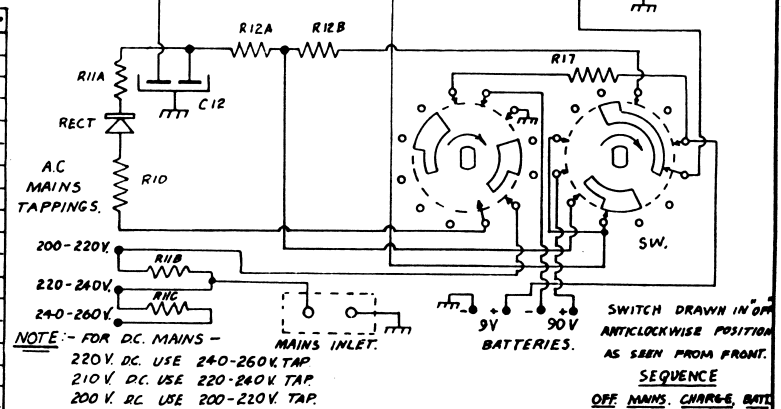


WHEN OPERATING THIS RECEIVER OUT OF THE CABINET CONNECT TO MAINS VIA AN ISOLATING TRANSFORMER

NOTE :- ALL VOLTAGE MEASUREMENTS TAKEN WITH RESPECT TO CHASSIS WITH A METER OF 1000Ω/V. RECEIVER ON AC MAINS FREQUENCY COVERAGE :- 535 - 1650 Kc/s.

WHEN ORDERING REPLACEMENT PARTS PLEASE STATE THE FOLLOWING :- MODEL No, CHASSIS No, PART No, CIRCUIT DESIGNATION AND GENERAL DESCRIPTION

CIRCUIT DESIGNATION	DESCRIPTION	PART No	CIRCUIT DESIGNATION	DESCRIPTION	PART No
R1A,B	RESISTOR CARBON 100KΩ ½W ±15%		C1A,B,C,D	CAPACITOR 100PF MICA ±15%	
R2	" CARBON 330Ω ½W ±10%		C2	" .002μF 2000V PAPER ±15%	
R3	" CARBON 6.8KΩ ½W ±10%		C3	" .05μF 200V PAPER ±15%	
R4A,B	" CARBON 2.7MΩ ½W ±15%		C4	" TRIMMER HY-Q 5-50PF	
R5	" CARBON 2.2MΩ ½W ±15%		C5	" 2 GANG PHILIPS	
R6	" W.W. 10Ω ½W ±10%		C6	" 0.1μF 200V PAPER ±15%	
R7A,B	" CARBON 220KΩ 1W ±15%		C7	" TRIMMER WIRE 3-30PF	
R8	" POTENTIOMETER 1MSL "C" TAPER	32-55	C8	" PADDER 480PF MICA ±15%	
R9A,B,C	" CARBON 1MΩ ½W ±15%		C9A,B,C,D	" .01μF 600V PAPER ±15%	
R10	" W.W. 270Ω 3W ±5%		C10A,B	" .05μF 400V PAPER ±15%	
R11A,B,C	" W.W. 115Ω 3W ±5%		C11	" .002μF 100V PAPER ±15%	
R12A,B	" TYPE FRM 20W 1500Ω ±1500Ω ±5%		C12	" ELECTRO. 2x30μF 350V +40-40V	
R13	" CARBON 2.7MΩ 1W ±15%		C13A,B	" .005μF 600V PAPER ±15%	
R14	" CARBON 0.47MΩ 1W ±15%		C14	" ELECTRO. 50μF 40V +40-0V	
R15	" W.W. 25Ω ½W ±10%		C15	" ELECTRO. 500μF 12V +40-0V	
R16	" CARBON 47KΩ ½W ±15%				
R17	" CARBON 4.7KΩ 1W ±15%		SPKR.	SPEAKER. 4" MSP	
R18A,B,C	" W.W. 150Ω ½W ±10%		T.	SPEAKER TRANSFORMER 1000Ω-15Ω	
R19	" CARBON 390Ω ½W ±10%		Note.	SOME RECEIVERS HAVE BEEN FITTED WITH 5+4 F ROLA SPEAKER + 1000Ω-3.5Ω TRANS.	
L1	LOOP STICK ASSEMBLY	14-30	RECT.	METAL RECTIFIER.	14B-261
L2	OSCILLATOR COIL	14-29	BATTERIES	EVEREADY TYPE 495 90V.	
I.F.T. A,B	I.F. TRANSFORMER 455 KC/S.	24-16	"	" 733 9V.	
SW.	SWITCH 4 POLE 4 POSITION	17-46		OR EQUIVALENTS.	



NOTE :- FOR DC MAINS - 220V. DC USE 240-260V TAP 210V. DC USE 220-240V TAP 200V. DC USE 200-220V TAP. SWITCH DRAWN IN OFF ANTICLOCKWISE POSITION AS SEEN FROM FRONT. SEQUENCE OFF MAINS. CHARGE BATT.

MATERIAL	PLANNED	PROJECT	QTY.	PROJECT	QTY.	PROJECT	QTY.
GAUGE	DRAWN	T. Rowe	6-11-56				
FINISH	CHECKED	D. LEAVE	10-11-54				
Prescription No.	APPROVED	A. Fowler	12-3-57				

RECEIVER, AC, DC, BATTERY PORTABLE. 21-6.

Work to Dimensions only. Unless otherwise specified. Tolerances to be read as: ± on Fractions. ± on Decimals.

Before production is commenced 2 samples must be submitted to Drawing Office for approval. ISSUE 1

This Drawing must be returned to KRIESLER AUSTRALASIA PTY. LTD. 43 ALICE STREET, NEWTOWN. SCALE