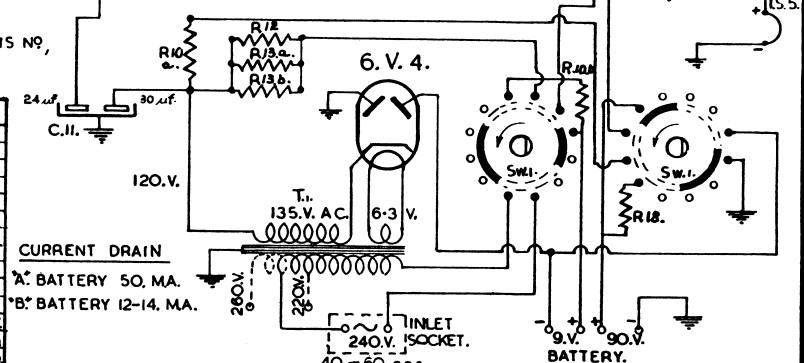


NOTE. ALL VOLTAGE MEASUREMENTS WERE TAKEN WITH RESPECT TO EARTH, WITH A VOLTMETER 20,000 Ω/V. ON D.C. & 1,000 Ω/V. ON A.C. WITH RECEIVER OPERATING OFF-MAINS. SWITCH SHOWN IN EXTREME CLOCKWISE POSITION - OFF. WHEN ORDERING REPLACEMENT PARTS, PLEASE STATE THE FOLLOWING: RECEIVER, MODEL NO, CHASSIS NO, PART NO, CIRCUIT DESIGNATION & GENERAL DESCRIPTION. FREQUENCY COVERAGE - 535 Kc/s. - 1660 Kc/s.

Circuit Designation	DESCRIPTION	Part No	Circuit Designation	DESCRIPTION	Part No
R.1.a.b.	Resistor, Carbon 1.M. Ω. ± 10%		C.5.a.b.	Capacitor Paper - 1. μf. 200.V. ± 15%	
R.2.a.b.c.d.	" W. W. 390 Ω. ± 10%		C.6.	" Mica. 3. pf. ± 15%	
R.3.	" Carbon. 39 K Ω. ± 10%		C.7.	" Trimmer PHILIPS Wire. 3-30 pf.	
R.4.a.b.	" " 100K Ω. ± 10%		C.8.a.b.c.	" Paper. 0.1 μf. 600.V. ± 15%	
R.5.a.b.	" " 1,000 Ω. ± 10%		C.9.	" Mica. 465. pf. ± 2 1/2%	
R.6.	" " 6.8 K Ω. ± 10%		C.10.	" Electro. 25. μf. 40 Volt. -10% +40%	
R.7.	" " 2.7 M Ω. ± 10%		C.11.	" Dual 30 μf. 350.V. ± 24 μf. 150.V. ± 10%	
R.8.	" " 4.7 M Ω. ± 10%		C.12.	" Paper. 0.02 μf. 600.V. ± 15%	
R.9.	" Potentiometer I.M. Ω. 1W. c. Taper. ± 20%		C.13.a.b.	" .005 μf. 600.V. ± 15%	
R.10.a.b.	" Carbon. 2.2 K Ω. ± 10%		C.14.	" Electro. 400 μf. 12.V. -10% +40%	
R.11.	" " 10M Ω. ± 10%				
R.12.	" W. W. 2665 Ω. 20.W. ± 5%		L.52.	Aerial coil (Loop)	14-27
R.13.a.b.	" Carbon 22 K Ω. ± 10%		L.53.	B/C Oscillator coil.	14-26
R.14.	" " 2.7 M Ω. ± 10%		L.54.	B/C R.F. coil.	14-25
R.15.	" " 4.7 M Ω. ± 10%		I.F.T.1 & 2	I.F. Transformers (455 Kc/s)	24-14
R.16.	" " 2.7 M Ω. ± 10%		T.1.	Power transformer.	16-89
R.17.a.b.	" " 47 K Ω. ± 10%		Sw.1.	Switch 4. Pole. 4. Position.	17-40
R.18.	" " 27 K Ω. ± 10%				
C.1.a.b.	Capacitor Trimmer .5-50 pf.		Speaker.	M.S.P. 5" or ROLA. 5.F. SP. TRANSF. 10,000 Ω. Prim. Sec. to suit Speaker used.	
C.2.	" A.W.A. 3 Gang. midge.		Battery	Pack Eveready Type or its Equivalent.	753
C.3.a.b.c.d.	" Mica. 100 pf. ± 15%				
C.4.a.b.c.d.e.	" Paper. 0.05 μf. 200.V. ± 15%				



MATERIAL	PLANNED	PROJECT QTY.	PROJECT QTY.	PROJECT QTY.
GAUGE	DRAWN 7.10.54			
FINISH	CHECKED			
Prescription No.	APPROVED			

PORTABLE - RECEIVER 21.-5.

Work to Dimensions only. Unless otherwise specified, Tolerances to be read as: — on Fractions. ± on Decimals.

Before production is commenced 2 samples must be submitted to Drawing Office for approval. This Drawing must be returned to KRIESLER AUSTRALASIA PTY. LTD., 45 ALICE STREET, NEWTOWN.