

BOX 107 P.O. CARINGBAH N.S.W. 524-0444

PLEASE CIRCULATE TO YOUR SERVICE DEPARTMENT

RADIO DATA SHEET NO. 106

DESCRIPTION: Model 11-105 "Minimate" is a lightweight portable Record Player. The amplifier employs a four-transistor complementary-symmetry circuit. The unit is housed in a polypropylene case.

RECORD PLAYER: 4-speed, B.S.R., Type TU12.

CARTRIDGE: Type C1, Ceramic.

STYLUS: Type ST3.

SPEAKER: 4" Round, Rola, Type 4D00, 10Ω.

PRESSURE: 6-8 Gms.

MAINS SUPPLY: 220-260 volts, 50 c/s. A.C.

For operation on 40 c/s. supply change motor.

DIMENSIONS: 17" wide, 11" high, plus handle. 5" deep. Weight 8 $\frac{3}{4}$ lb.

CHASSIS ACCESS: Place unit upside down on lid. From the back remove the outer screw from each of the two black polythene feet, and the two silver-plated mushroom-head screws near the bottom edge. Remove one screw adjacent to each end of the lower section of the carrying handle. Lift off back to expose chassis and components.

CAUTION: Always return motor speed selector to neutral ("N") when unit is not in use, to avoid damage to idler wheel.

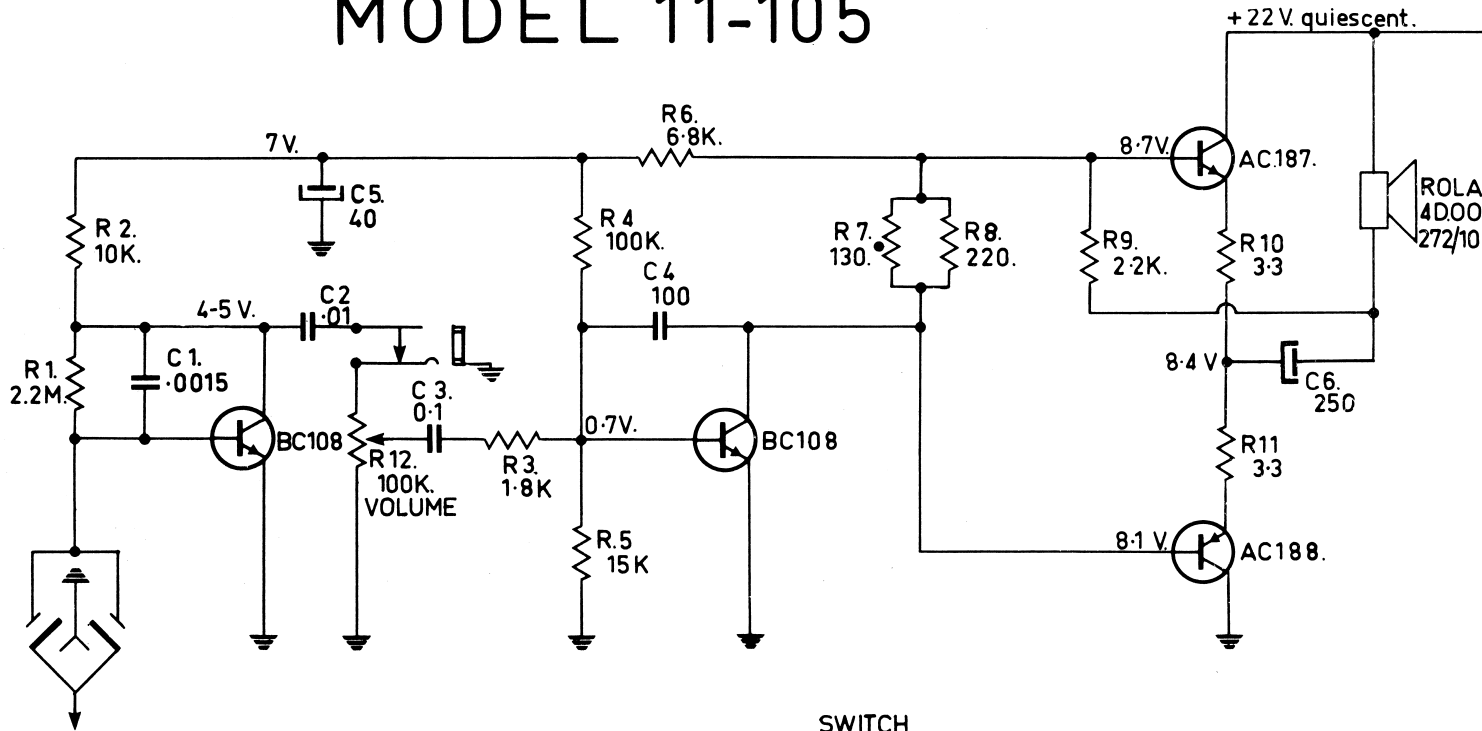
NOTE: The motor has no automatic stop. The off-on volume control switch disconnects power from the motor.

SPECIAL NOTICE: Interim Service Advice. Please amend Parts List in Radio Data Sheet No. 102, Speaker Output Transformer for Model 11-103 from Type 18-5678 to 18-6726. Type 18-5678 is used in Model 11-102.



MODEL 11-105

MODEL 11-105



R12 100KΩ VOL. CONTROL 'C' TAPER D.P. S.T.
SWITCH PART No. 32-7110.

R10, R11, ARE BW. 1/2 WATT 10%.

R7. PHILIPS THERMISTOR B8.01A/130E.

ALL OTHER RESISTORS B.T.S. 1/2 WATT 10%.

C1. .0015 μf ±10% 200V DUCON STYRO DFB 214.

C2. .01 μf ±20% 25V. DUCON REDCAP CDR STYLE 'A'.

C3. 01 μf ±20% 25V " " 'C'.

C4. 100 pf ±10% 600V. " STYRO DFB 600.

C5. 40 μf +50-10% 16V. PHILIPS C426-AR-E40.

C6. 250 μf +50%-10% 16V. " C436-AR-E250.

C7. 2000 μf +50%-10% 25V.W.(40V.P.) DUCON ET5D.

AC187 & AC188 TRANSISTORS ARE A COMPLEMENTARY MATCHED PAIR.

MOTOR UNIT-TU.12. MOTOR 240V. INPUT, 22V. OVERWIND.

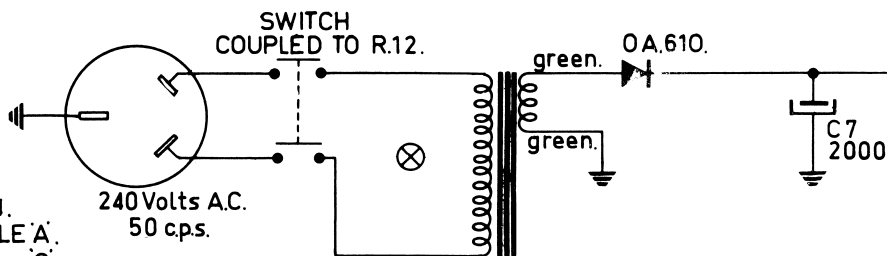
P.U.30 PICK-UP ARM - C1. CARTRIDGE - STYLUS ST3 SAPPHIRE.

CABINET ASSY. 90-7140. EARPHONE JACK 90-4863.

VOLUME KNOB 20-7160 B. - SPEED CH. KNOB 20-7103.

CHASSIS MTG SCREWS 5/32" W. x 1/2" MUSH. HD. NICKEL PL.

FOOT MTG SCREWS 1/8" W. x 1/2" RD. HD. NICKEL PL.



Label part no. 10-7113.

MODEL 11-105 ISSUE 1	RECORD PLAYER AMPLIFIER	drawn.	L.T.B.	15-8-66
		checked.	D.A.J.	15-8-66
		approved	C.E.K.	16-8-66